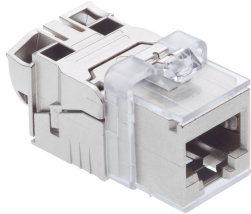


Product information

Connection Module Cat. 6A EL, 1xRJ45/s, Keystone, 10x

R813512
10 pcs



The module for the classic office cabling. Easy to install with solid Cat. 6 performance.

- RJ45 Cat. 6_A EL connection module, shielded
- Keystone adapter
- Dust cover

090.7170

Description

The R&M *freenet* Cat. 6_A EL connection modules, part of the Freenet cabling system, are ideal for voice, fast data transmissions and high bandwidth applications. This highperformance Cat. 6_A module is perfect for use in 10 Gigabit Ethernet (10GBASE-T) and future high-speed applications up to 500 MHz.

Technical Data

DESCRIPTION [UNIT]	VALUE/VALUE RANGE
Standard	UL Recognized IEC 60603-7-51: Electrical Characteristics of the Telecommunication Outlets ISO/IEC 11801-1 Ed 1.0 2017-11 EN 50173-1: May 2011
Protection class IP	IP 20
PoE	Yes
Connector class	connection module
Shielding connector (A)	shielded
Connector type (A)	RJ45
Category connector (A)	Cat. 6 _A ISO
Holder for connector / module	Keystone adapter
Wiring diagram	T568A and T568B
Poles	8

Mechanical Data

DESCRIPTION [UNIT]	VALUE/VALUE RANGE
Color	metallic

RJ45 connection module of Cat. 6_A ISO, for the setting up of transmission channels of Class 6_A with up to 4 connectors acc. to ISO/IEC 11801 ed. 2.2, June 2011, EN 50173-1 May 2011 (DIN EN 50173-1), complies with Cat. 6_A requirements of the standards ISO/IEC 11801 ed. 2.2, June 2011, EN 50173-1 May 2011, as well the U.S. standard Cat. 6_A according to TIA 568-C.2, re-embedded tested in acc. with IEC 60603-7-51 and 60512-27-100,

interoperable and backwards compatible with Category 6 and Category 5e.
 Suitable for 10GBASE-T applications in acc. with IEEE 802.3™ Section Four up to 500 MHz and 100 m.
 Tested in line with R&M's manufacturing control, performing 100% inspection. Each module has an own serial number and is traceable.

Compatible with RJ standard plugs (RJ11, RJ12, RJ45), connection of installation cables AWG 26 - 22 (0.4 mm - 0.65 mm) and flexible cables AWG 26/7 - AWG 22/7 without special tools. Parallel pair termination without crossover in acc. with TIA 568-A/B, gold-plated bronze contacts for >1000 mating cycles, IDC contacts with ≥4 insertion cycles acc. to IEC 60352-3, contact resistance <5 mOhm, dielectric strength >1000 Veff. Supports PoE (IEEE 802.3af), PoEP (IEEE 802.3at), 4Ppoe (IEEE 802.3bt) and is compatible to IEC 60512-99-001/002. With integral cable strain relief, including dust cover, nickel plated zinc die-cast housing, ground contacting through 1 contact finger for flat connectors AMP 2.8 x 0.5 mm.

Material: halogen-free and heavy-metal free in acc. with EU directives RoHS 2.

Connection module Cat. 6_A EL, die-cast, shielded, dust cover and Keystone adapter.

	Description	PU	Product No.
	Cable Insert Cat. 6A EL, 4-5 mm Cable	100 pcs	R813797
	Copper foil for Module Cat. 6A EL, 10x	1 pcs	R824374
	Copper foil for Module Cat. 6A EL, 100x	1 pcs	R814599
	Adapter 90° Module RJ45 C6A-EL/s-10	10 pcs	R833665